

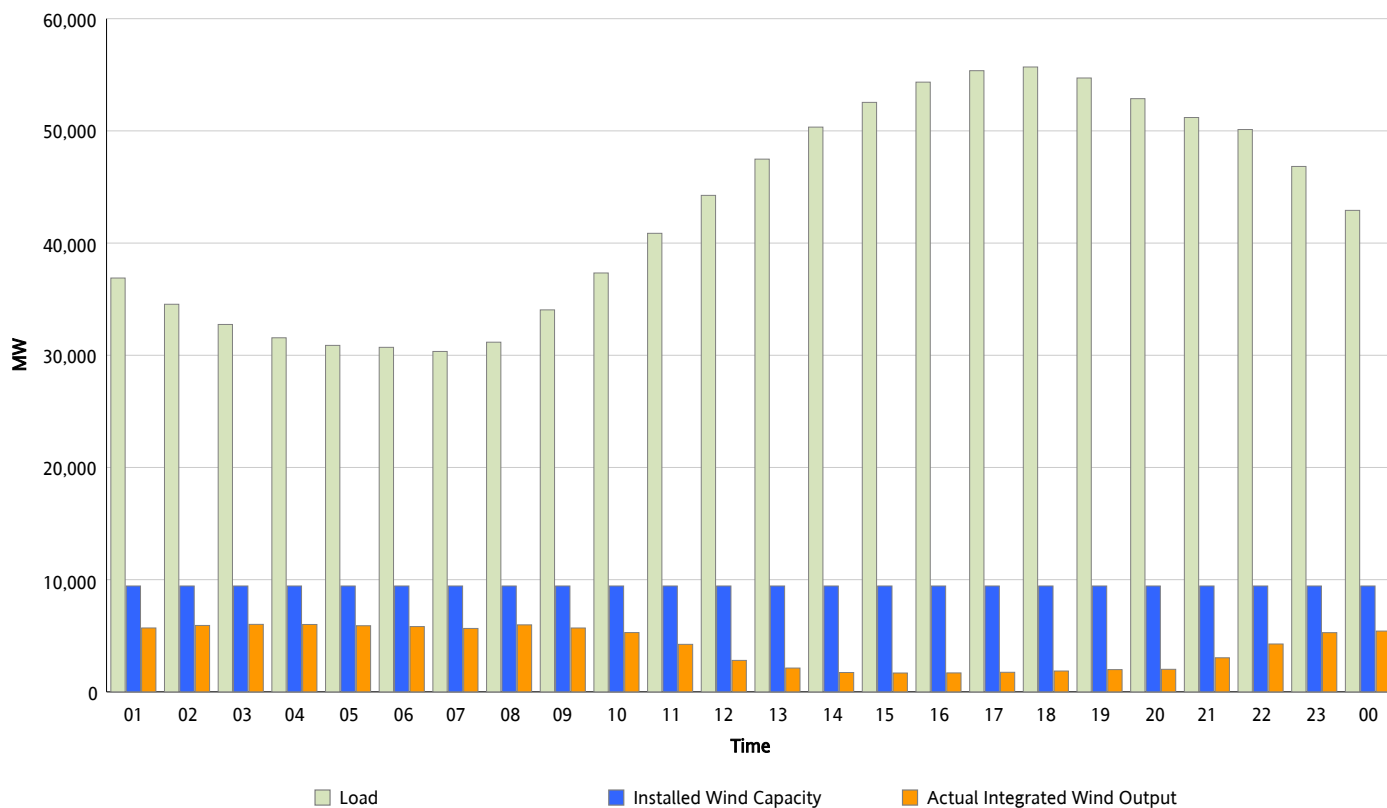


ERCOT Grid Operations

Wind Integration Report : 06/10/2012

Peak Load	55,694 MW
Load Peak Hour (HE)	18
Wind Over Peak	1,861 MW
Wind Record 04/13/12	7,925 MW
Max Wind Value*	6,115 MW
Wind Peak Time	03:01
Wind Integration %	19.13 %

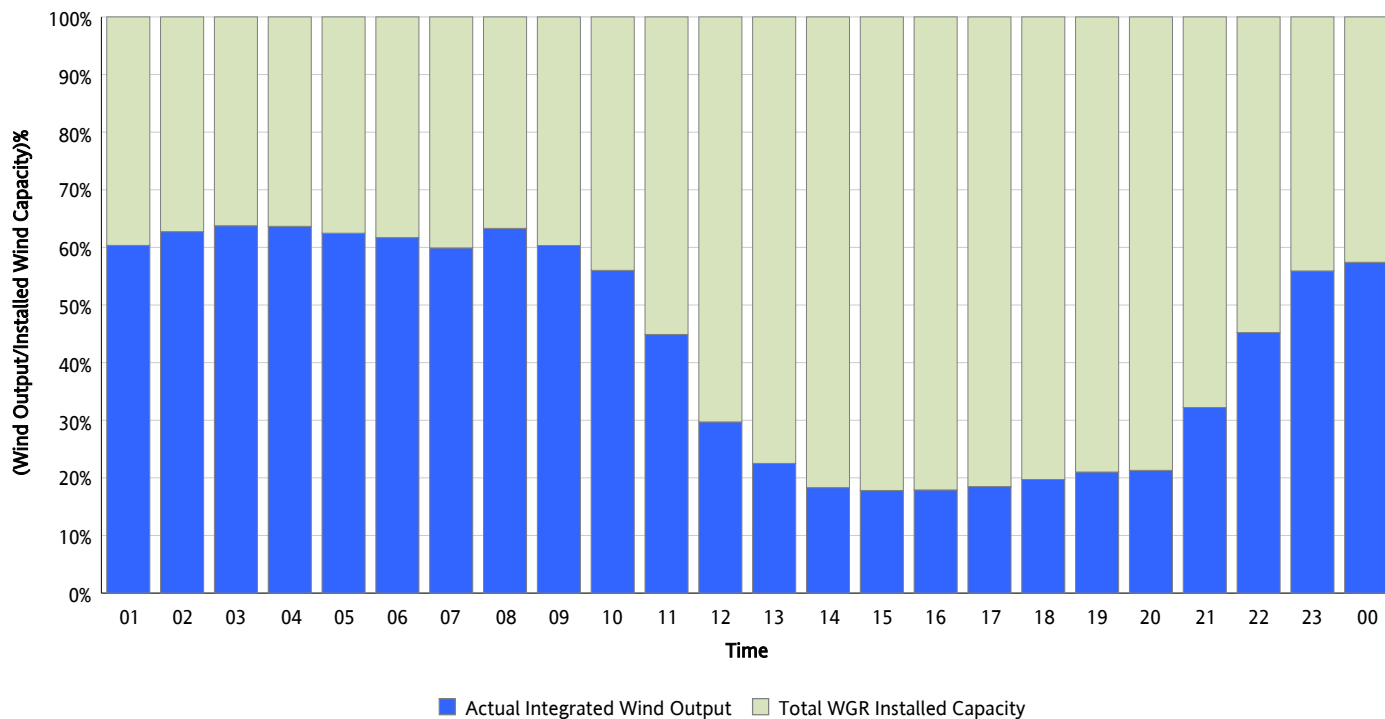
Hourly Average Actual Load vs. Actual Wind Output
06/10/2012



** Wind Record and Wind Max represent instantaneous values and the rest of the values are integrated over the hour*

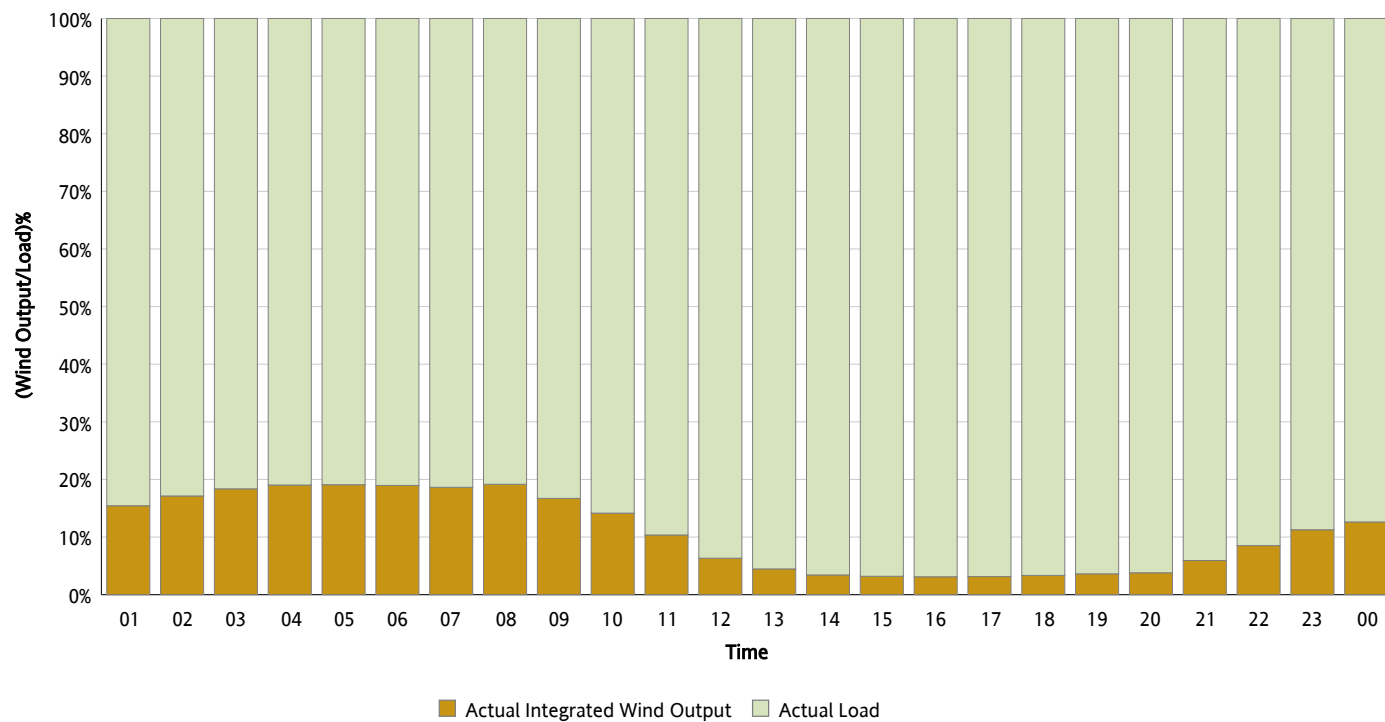
Actual Wind Output as a Percentage of the Total Installed Wind Capacity

06/10/2012



Actual Wind Output as a Percentage of the ERCOT Load

06/10/2012



ERCOT Load vs. Actual Wind Output

06/03/2012 - 06/10/2012

